



# Town Meeting Approaching in March

## Newly Published Walpole Author

Kay Enokido and her husband, Tom Crouse, built a house and settled in Walpole 13 years ago. She eventually started spending much of her time: writing, traveling, researching, editing interviewing and immersing herself in wartime Manchuria – the country where she was born. Her book, *Phantom Paradise – Escape from Manchuria*, was finally released on January 13, 2026.

Kay's parents moved to Manchuria from Japan in 1938, as war was brewing in Europe and Asia. Wanting to learn more about that period in her family's history, Kay asked her mother to write down her memories of that time. After reading her mother's journal, Kay remembers, "The most moving event was the realization of what an incredible woman my mother had been. She was an ordinary young wife when she had

- Continued Page 4

**2026 Walpole  
Budget Hearing**  
Thursday, February 5, 2026  
5:30 pm  
**Snow date**  
Thursday, February 12, 2026  
5:30 pm

Valentine Card, 1870

## Town Meeting Current Details

As we begin "Town Meeting Season" the Selectboard is still working to finalize the budget as of this writing. Last February the CLARION was able to outline 15 Warrant Articles to be voted on at the polls on Tuesday, and continuing at Town Meeting on Saturday. However, as of press time the chair of the Selectboard reported to the CLARION, "...I don't think we will have the warrant articles until next week..."

Full Town Meeting (including details on Warrant Articles) will be in the March CLARION. As also reported last year, once available Full Warrant Articles will be on the Town Website under "Government" - "Town Reports" - Hardcopies of the Town Annual Report will be available prior to Town Meeting at the Town Hall. Once received the full Warrant Articles will be posted on the CLARION website from a sidebar link.

-Ray Boas



## Peggy on Housing

For the last year or so I have been interested in the almost daily articles about housing in New Hampshire, particularly as it may be applicable to Walpole's future. New Hampshire has a housing shortage now and for the foreseeable future. All the discussions center around an intense need for low income or affordable housing. A front-page article in Saturday's (Jan 17, 2026) SENTINEL quoted the Governor validating 2025 Zoning laws and once again acknowledging the need for more housing.

- Continued Page 2

**EVERETT E. HOUGHTON CO., INC.**  
 Electrical, Plumbing, Heating & Utilities

Electrical License - 0241C  
 Plumbing License - 4762C

279 Main Street  
 Walpole, NH 03608  
**Office - 603-756-3372**  
 Fax - 603-756-9998  
 After Hours - 603-615-5555

info@eehoughton.com  
 www.eehoughton.com



**DAN'S**  
**WATER TREATMENT SERVICE**

Sales & Installation of New Systems;  
 Servicing Most Existing Systems

603-756-4398 1-888-679-6059

**I Caught You  
 LOOKING**

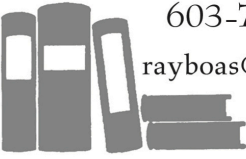
**Advertise Here  
 Starting at \$49.50**

**Keep Up  
 on Walpole Happenings**  
 Visit The Walpolean  
<https://thewalpolean.org/>  
 Sign Up to  
 FOLLOW BLOG VIA EMAIL

**Over the last 35 years  
 I have purchased  
 more than 94,582 books  
 Are Yours Next?**

**Ray Boas, Bookseller**  
 Since 1980

Good Books & Fine Libraries Purchased  
 603-756-4545  
[rayboas@comcast.net](mailto:rayboas@comcast.net)



## - Housing from Page 1

Where does Walpole fit into this need for housing? And what constitutes "affordable" housing? Interestingly, asking these questions online gives AI responses, not always the same.

Walpole, according to the US Census in 2023, has a population of 3,655. The 2024 Census states population as 3,717. The Median age is 44.7. The town's elderly population over 65 is about 20.95%, which is higher than the national average of 16.04%. The female population represents about 53.60 %, while the male population is 46.40%. Most residents live in single family homes. Generally, Walpole and the State of NH's population is considered older and decreasing, in contrast to growth in other states. The Median household income is about \$76,875. (2023). Walpole is often described as a town with limited diversity, high education profile, older with a suburban-rural lifestyle.

The elderly are increasingly living alone in single family houses. While this may be satisfying for many, it also means fewer turnovers of property and potential isolation of the elderly. River Valley Seniors at Home is actively asking Walpole groups of Seniors to join them in an advocacy group to provide healthy activities to offset loneliness and promote wellness.

The Walpole Foundation has plans to build senior rental housing around The Walpole Village School. Those units will be two bedroom or one bedroom with attached garages. Elderly housing and preschool education and childcare centers provide healthy, satisfying cross generational activities.

Perhaps it is time to have a community dialog to discuss where Walpole will be in ten or twenty years, and what type of housing will be required.

*(Formerly a Selectboard member, the views expressed here and in "Peggy's Desk" are solely those of the author and do not represent the official position of the Town.)*

**Trash Talk**  
 An educational smorgasbord  
 of everything trashy  
 From the Recycling Center



Hello to my fellow recyclers! My three months of interim manager has come to end. I call Walpole Recycling my second home, I absolutely love working for the Town of Walpole. So, it's official I am the new full-time manager! Thank you to all for your support over the years! Here is some information we received from NH Recycles, a nonprofit that helps the town move recycled materials.

## **ENVIRONMENTAL IMPACT REPORT**

We recycled 35,054 pounds of plastic saving 1,842 gallons of gasoline, 64,520 pounds of glass which is the equivalent of about 386 trash bags out of the landfill, 229,922 pounds of cardboard saving 1,954 trees, 6,680 pounds of tires saving 159 gallons of oil! Recycling uses much less energy than making products from virgin resources, which means fewer greenhouse gases entering the atmosphere. By recycling the materials above, our community helped avoid approximately 958,103 pounds of carbon dioxide emissions. That's like removing 97 passenger cars from the road for an entire year!

Safety is our priority here at Walpole Recycling. We have a system in place for staff, volunteers and residents to have safe experiences. DO NOT back up in the yard, please drive around the circle. If you have any questions, see myself, Patty, Don or Steve and we will be happy to help. Keep smiling, Walpole!

-Shaena Hakey





# WALPOLE SOCIETY

FOR BRINGING TO JUSTICE  
HORSE THIEVES  
AND PILFERERS

ORGANIZED IN 1816. INCORPORATED 1835.

Starts Its  
211th Year



The Walpole "Horse Thieves" once again braved the fierce NH weather and held their annual meeting on Saturday, January 17. They approved the reports by the clerk, treasurer, auditor and nominating committee. Jeff Miller was elected as the new president of this venerable organization, and Joe Fennessey was elected vice president. Officers of the "Horse Thieves" are elected annually but usually serve for a two-year cycle. Trevor MacLaughlan completed his two years as president at this meeting, and Jeff Miller now takes over the reins. The other officers were unchanged.

The Walpole "Horse Thieves" are probably the third oldest society for preventing horse thieves in the country, and possibly the third oldest in the universe. The organization is also one of the oldest organizations in the state of NH, having been formed in 1816, so now beginning our 211<sup>th</sup> year.

Any men who are residents of Walpole and would like to join this remarkable organization should contact Lewis LaClair, Clerk ([LLaclair@Advancedrisk.com](mailto:LLaclair@Advancedrisk.com) or 756-0001). Membership is open to men 18 or older who live in Walpole, pay a \$2 lifetime dues and sign the membership book.

- Lewis LaClair, Clerk

## Walpole School Withdrawal Information Meetings

The Walpole Selectboard is hosting three informational meetings related to the Walpole School Withdrawal Warrant Article that will be on the upcoming school district ballot. The meetings will include a presentation, and will be held in the first-floor meeting room of the Town Hall. To learn more about the potential withdrawal and to ask questions, please attend one of the following meetings.

**Wed., February 11 - 6:30 pm**

**Wed., February 25 - 6:30 pm**

**Saturday, February 28 - 1:00 pm**

## Petition Warrant Articles

Three Petition Warrant Articles were submitted for this year's ballot, each signed by 60 Walpole citizens. Twenty-five confirmed signatures are needed for a petition warrant article to appear on the ballot.

Briefly, these are:

1 - **The Protecting Taxpayers warrant article** calls on the New Hamp-

shire Legislature to "... protect local taxpayers by ensuring adequate state revenues for essential services, and by avoiding policies that shift costs onto the local property taxpayers."

2 - **The Self-governance warrant article** asserts "...the right to self-governance over local boards and local elections by opposing any efforts that introduce partisanship into local elections or that deny towns local control regarding their local boards" by the Legislature.

3 - **The Education Freedom Accounts warrant article** calls on legislators to "... protect taxpayers by requiring the Education Freedom Account program to provide fiscal and educational performance reports comparable to those required of public schools, and by limiting eligibility to families with demonstrated financial need.

These articles stem from a citizen led initiative in New Hampshire to place non-binding policy questions on town ballots. Passage will not create law, but instead indicates how voters feel about issues. They were submitted by "Working for Democracy", a group of citizens that meets to consider issues relating to democracy. It is unaffiliated with any political party.

-Jonathan Crocker

• • • • •

## 250th Countdown

Following the Battles of Lexington and Concord, British forces were trapped in Boston and decided to try to take control of the Southern Colonies. Thus, in early 1776, British Royal Governor Josiah Martin initiated a plan to reassert control in North Carolina. Patriot and Loyalist forces met at Moores Creek Bridge in what is now Currie, North Carolina on February 27, 1776. Loyalist forces had anticipated support from a British army arriving along the coast. The Patriots achieved a victory that solidified their control of North Carolina. This victory served as a major deterrent for Loyalist support until the opening of the Southern Campaign four years later. The Moores Creek National Battlefield commemorates the skirmish.





## FOCUSPOINT

Digital Marketing | Websites | PPC Management

Website Design for  
Home Service Pros Since 2003

www.focuspointwebsolutions.com  
603-756-2893



REAL ESTATE

**Want to sell, but  
afraid to?, Let's talk.**

**Robin Sanctuary, Broker**

Office: 603-756-3973

Cell: 603-313-9165

[www.TraditionsReal-Estate.com](http://www.TraditionsReal-Estate.com)



## Please Support Our Advertisers

### APARTMENT AVAILABLE

for quiet, fragrance-free worker/tenant  
to work for part of rent

yard work, home maintenance

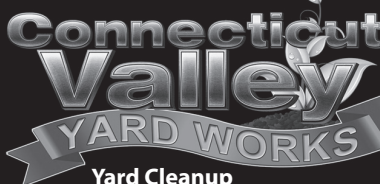
work rent down from \$1500\*

1 bdr, 800 sq ft, Walpole

rentwork29@gmail.com



\*\$1200 for quiet lifestyle, reliability, good communication



**Yard Cleanup**

**Mowing • Brush Hogging**

**Bark Mulch • Snow Plowing**

Phone: 603-499-6799 • PO Box 576 Walpole N.H.

Fully Insured • Call Today for a Free Estimate

-Newly Published from Page 1

gone to Manchuria in 1938 with my father and older brother. Then the war broke out." What followed for Kay's mother, left alone with the young children after her husband was conscripted into the army, was constant fear, violence, uncertainty, hunger, and disease that her mother had to navigate. "While reading my mother's vivid writing with great details of this 'live or die' existence, I felt that the fact I am still living was a miracle."

Kay had been moved to write this book, crafted around her mother's journal, with historical background and details coming from her many trips to China, Japan and Washington, DC. The result is a vivid recounting of a piece of history many people don't know about – the time from the Japanese conquest of Manchuria in 1931 to the eventual Invasion by the Soviet Union in August of 1945.

Asked what she found the most difficult part of writing the book, Kay answered, "I had discovered so much new information during my research. It was exciting to learn something new, and I wanted to include all those discoveries. However, I was told by fellow writers that it is important to 'let the darlings go' to keep a sharp

focus on the core message. It wasn't easy!" But she ultimately added elements of her life after she came to America and established a distinguished career in Washington, DC, as had been encouraged by her editor. It is a fascinating story, as Walpole's Ken Burns writes: "A riveting tale of survival and transcendence. I could not put it down."

-Tara Sad

*Phantom Paradise: Escape from Manchuria* is available on Amazon, or through your local booksellers.

## Gleanings from the Town Minutes

### Police Building Committee

**January 6, 2026**

The Committee has been notified that we are the recipient of a USDA grant of \$2,058,000. This is the result of our grant written by Nancy Merrill and submitted to Senator Shaheen's office. The grant was financed through the budget which was adopted at the end of the government shut down. The state office of the USDA is short staffed, but we will work with Rena Peck who is in the New Hampshire office of USDA.

The Committee had a short discussion of when to approach the Town voters with a warrant for bonding the remaining cost of construction for the new station. Mr. Dalessio noted that we will need special state permission for any bond which exceeds 10% of our budget.

### Walpole Planning

**December 9, 2025**

The Board compared Walpole's current Detached Accessory Dwelling Unit ordinance with the most recent changes by the state. ... town's counsel, Jeremy Hockensmith, suggested 16 revisions to our current ordinance. An example of one of them is, "The Ordinance section should be re titled from 'DADU' to 'ADU'. The statute makes no distinction between attached and detached units, so the ordinance should not either."

A riveting tale of survival and transcendence.  
I could not put it down.  
KEN BURNS, FILMMAKER



## PHANTOM PARADISE

Escape from Manchuria

KAY ENOKIDO



# Walpole Worships

First Congregational  
Sunday, 10:00 am

Bible Study - Wed. 4-5 pm on Zoom  
<https://walpolenhucc.org/>

St Peter's Church - North Walpole  
Mass Schedule: Friday 8:30 am  
Saturday 4:00 pm - Sunday 8:30 am

St. John's Episcopal  
Sunday, 10:00 am  
<http://stjohnswalpole.org>

Walpole Unitarian  
Sunday, 10:00 am  
<https://walpoleuuchurch.wixsite.com/walpoleunitarian>

River Valley Church  
Sunday  
9:00 am and 10:30 am  
38 Elm St., Walpole  
[rivervalleychurch.com](http://rivervalleychurch.com)

**For Service Schedules  
visit the church websites.**

## First Congregational February Events

**SOUPerbowl Sunday** - February 8: Our Missions committee will be selling hot, homemade soup immediately following our 10:00 am worship service, to benefit our various service activities and benevolence support.

**Fat Tuesday Pancake Supper** - February 17: Shrove Tuesday, AKA Fat Tuesday (Mardi Gras) the final feast before Lent. Together with the good folks of Saint John's Episcopal Church, we will cohost a pancake supper in the Fellowship Hall of First Congregational. All are welcome. Free will offering for the meal.

**Ash Wednesday** - Wednesday-February 18 at 7:00 pm there will be a special worship service to mark the beginning of Lent. The service will be held in the sanctuary. It will include Communion and the imposition of ashes.

## LEN-TEX WALLCOVERINGS

*The  
Intelligent  
Choice for  
Decorative  
Interiors.*

[lentexwallcoverings.com](http://lentexwallcoverings.com)

Now Hiring  
Scan for Career  
Opportunities



Introducing the **Bright Futures 5K** fundraiser!

# Bright Futures Start Here



**Kurn Hattin Campus** | **MAY 2**  
**5K Run + 3K | 10 AM**

### How it works:

- Register as an individual or create a fundraising team
- Invite friends, family, or coworkers to support your goal
- Run or walk together on race day to celebrate your impact

### ALL ARE WELCOME:

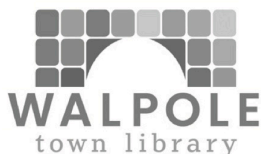
Runners, walkers, families, strollers, and friends

### ALL FOR A CAUSE:

Helping Kurn Hattin kids thrive



Register today and create a fundraising team: Scan the QR code or text KHRUN to 71777  
Questions? Contact Erin Beaudry | [ebeaudry@kurnhattin.org](mailto:ebeaudry@kurnhattin.org) | 802-721-6914



For more information,  
visit the library website -  
<https://walpoletownlibrary.org>  
or call 603-756-9806.

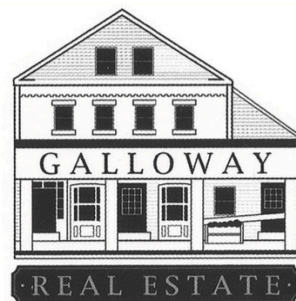
Links may also be clicked from the  
**Clarion** On-Line Resources page.

## February at the Library

**Drop-In Mom's Group:** Monday, February 9, 10:30 am. For new moms and those with young children. Led by Sarah Breen, a maternal-child nurse, and board-certified lactation consultant

The Walpole Town Library and the Hooper Institute will present two fascinating programs this month on **Bobcats and Coyotes: Our Wild Neighbors**. Monday, February 2, 2 pm. (adults only) and Thursday, February 12, 3:30 pm (kids ages 8-13 or under 8 with a guardian.) Adults will learn about common misconceptions, human interactions, and their importance in the environment. The kids' program will feature a story and a hands-on craft..

**Lunch and a Movie:** *Downton Abbey: The Grand Finale*. Thursday, February 19, 1 pm. Bring your lunch and come in from the cold to enjoy a movie in our Community Room.



Did you know that the  
associates at Galloway  
Real Estate support local  
nonprofits with their time,  
talents and money?

Ask us about this!

Receive a free  
opinion of value  
from your local  
Real Estate Professional!

*"Building our communities one family at a time."*

47 Main St. PO Box 100  
Walpole, NH 03608  
603-756-3661  
[www.gallowayservices.com](http://www.gallowayservices.com)

## Got Missing, Broken or Embarrassing Teeth?

The solution could be just one  
phone call away.

Get your bite and smile back. We  
make it easy for you to get the  
care you want, so you can eat  
and smile with confidence again.

**No Judgment.  
No Lectures.  
No Hassles.**

## Smile Again

No matter how long it's been since your last dental visit, or  
whether you have minor issues or big smile problems, you can  
feel confident that you will never feel shamed, judged, or  
pressured. What you will find is a plan to get you smiling again!



Dr. Bowman



Dr. Sayball



Dr. Dulock



Dr. Alexanian

- Botox® and Dermal Fillers
- Sleep Apnea
- Injection Molding Composite Veneers
- Full Arch Restoration: AOX
- Cosmetic Dentistry
- Implants & Permanent Dentures



[www.BowmanDental.com](http://www.BowmanDental.com)

**603.756.4719**





Cleaning. Restoration. Construction.

**CHESHIRE COUNTY**

Since 603-352-7251 1978



**FIRE & WATER  
CLEANUP &  
RESTORATION**

**MOLD REMEDIATION**

**CONSTRUCTION**

**24-HOUR  
EMERGENCY SERVICE**

Independently Owned & Operated

**Edward Jones** > edwardjones.com



**Protect your family's  
financial future.  
Let's review your strategy.**



**Jessica Fuller**  
CFP®  
Financial Advisor  
57 Main Street  
Walpole, NH 03608  
603-756-2513

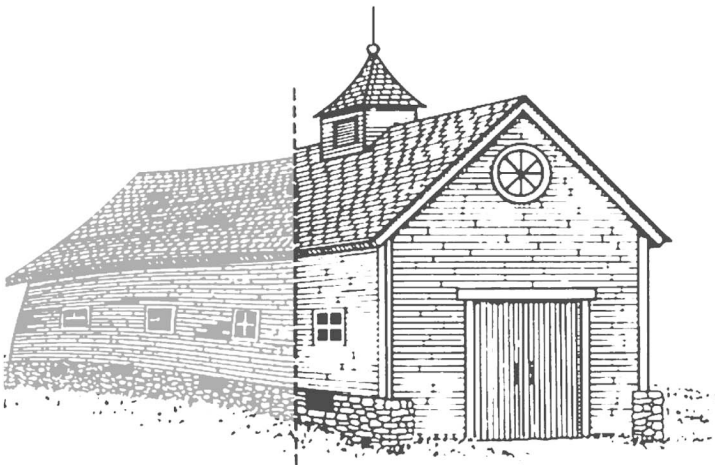
**Jennifer Skrocki**  
Senior Branch Office Administrator

**Ryan Astley**  
Registered Branch Associate

EJB-19325-A-E-DA-4 AECSPAD 27467525

# Chris Parker

## House and Barn Restoration



**www.oldbuildingfix.com**

- ★ Structural Restoration – Repair and/or Replacement of Damaged Foundations, Sills, Joists, Framing Timbers.
- ★ New Foundations Constructed under Existing Buildings.
- ★ Tasteful Remodeling of and Additions to Period Homes.
- ★ Recycling and Dismantling of Old Barns and Re-assembly.
- ★ Barn Frames, Timbers, and Barn Board for Sale.

**(802) 257-4610 • (802) 579-5163**

# Did You Know That...?

Explorations into Walpole People, Places & History with Ray Boas

...there are a number of remote roads in Walpole you may never see unless specifically going there? I remember one summer, 70 plus years ago, my mother decided we had to see every road in our then rural Connecticut town. Off we went over several days exploring. My backroad exploration gene was activated. Backroad explorations continued as I joined my Dad searching for old barns for antique cars that often came home with us. And, as a 16 year old in my 1929 Model A Ford Roadster, explorations on my own began, often up US Route 7 all the way into Vermont and across to New Hampshire. Readers of "Shunpiking with Ray" know my explorations continue today. But researching Maple Grove Farm the other day, I decided I had to again traverse both Ramsay Hill Road and Maple Grove Road to their dead ends, exploring without leaves on the trees.

Heading out of town on March Hill Road, Ramsay Hill Road is off to the left as you are climbing, and Maple Grove Road to the left just past Tole's Automotive. The parcel of land that is now the Maple Grove Farm was sold by Benjamin Bellows in 1775. Land in this area changed hands many times in the 19th century. In 1871, George B. Williams of Waltham, Massachusetts bought the old farm, which was, by then, rundown. According to George Aldrich in his 1880 his-

tory, besides making improvements to the farm buildings, Williams built a sugarhouse. Noted in Frizzell's history, the farm had 1000 trees in its maple orchard producing 300 gallons of syrup each spring, requiring the constant labor of six men. Driving down the road today, you no longer see stands of maple trees, but it is interesting to see, on the fold-out map prepared for the Frizzell history, there is outlined and labeled "Sugar Hill Lot", which is bounded by March Hill Road, Thompson Road, and Watkins Hill Road. The northernmost part of the "Sugar Hill Lot" is where Tole's Automotive is located. Albert Fletcher, who lived across the street on March Hill Road, established Pinnacleview Equipment in 1936 (now, as of January 2026, Townline Equipment) probably erecting the concrete buildings (now Tole's) shortly after that.

In 1926 the farm was purchased by Arthur H. Chickering, who sold off the mansion and twenty-five acres to



Sugaring at C. B. Holton's "Maple Grove"

Above — Sugaring is shown in the c1933 booklet *"Walpole New Hampshire - In a setting of rare scenic beauty - It retains the charm of Colonial Days"*

The booklet was produced by Peck's Drug Store (that was located in the Tavern building on Westminster Street). In my research I have not been able to find any reference to C. B. Holton or the location of this "Maple Grove". Can you help?

Michael and Mary Moore from Newtonville, Massachusetts. Mary established *THE WALPOLE CAMPS*, and the brochure for the 1928 season stated it was "the first of its kind in New England, particularly planned to fill two important needs"- Walpole Children's Camp for Boys and Girls 3-12 years; and Walpole Tutoring Camp and Dramatics for Girls 13-21 from "refined families." The fee for this camp was \$400 for the season, and \$350 for the former. The bank foreclosed on the Murrys in 1934, selling to the Mitchells. Since 1944, Maple Grove Farm has been owned by the Catherwood family.

Maple sugaring in New Hampshire began with the Indigenous peo-

## FLORENTINE FILMS

Making films in Walpole  
for 40 Years.





Especially in northern New England, the end of winter was “sugaring off season.” Farmers used augers to bore holes into sugar maple trees, and drove in hollow wooden spiles (taps) to collect the sweet sap in troughs or pails. They then boiled the sap down into sugar in large iron kettles. Here in southern New England, however, it was usually cheaper to buy imported white cane sugar from country stores than to burn valuable firewood and take the time to make maple sugar.



**Left — Maple Days at Old Sturbridge Village  
March 2023 depicting sap boiling as done c1835**

**Above - An information panel during Maple Days**

**-photos: Ray Boas**

ples who were first to discover and refine methods for harvesting clear sap from maple trees and processing into syrup or ‘maple sugar’. As a solid, the sugar could be transported for consumption and trade. Arriving here, Europeans quickly learned sugaring from Native Americans. Maple sugar was more practical than syrup lasting longer without spoiling. On small farms throughout New Hampshire, maple sugar production became a seasonal ritual in late winter and early spring. Dairy farmers and other small land holders kept groves of sugar maple trees close to their homes. Here in Walpole, the Galloway family processed syrup for years, and Great Brook Farm has been sugaring since 1943.

## Great Brook Farm Supports FMEEA

Great Brook Farm Sugarhouse was pleased to again send a check to the Fall Mt Educational Endowment Association (FMEEA), this year in the amount of \$829 representing 10% of our gross sales between November 22 and Christmas. A big thank you for the many in our community who purchased our maple syrup FMEEA has been serving the Fall Mt School District for over 25 years raising and distributing private funds to promote excellence and opportunity in the local schools to help fund programs that may not fall within the teacher's budgets.

**-Dave Westover**

## Valentine's Day

Valentine's Day can be traced back to the 5th century when Pope Gelasius I designated February 14th as a feast day for the martyr St. Valentine. The romantic association came later in the 14th and 15th centuries in Europe with linking the day with springtime and birds.

America's first documented Valentine was a handwritten poem by British officer John Graves Simcoe and presented to Sarah Townsend in New York on February 14, 1779. That poem



still exists, residing in the Rayham Hall Museum in Oyster Bay, NY. The Valentine alludes to the difficulty of loving an enemy. During the 18th and early 19th century simple notes and tokens were exchanged in observance of the day.

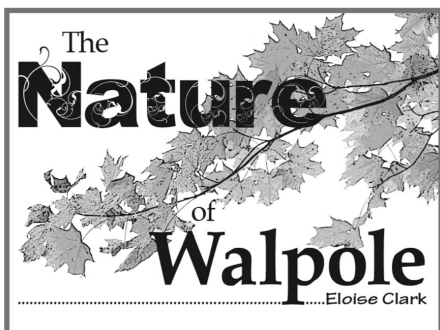
About 1847, Esther Howland of Worcester, Massachusetts, began selling the first mass-produced valentines in America making it a popular tradition. Considered the “Mother of the Valentine,” she made elaborate creations with real lace, ribbons and colorful pictures. It was also in 1847 that the first US Postage Stamp was issued, thus the prepaid mailing of cards became popular

**-Ray Boas**



**Great Brook Farm Sugarhouse**





Rocks can be classified into three basic kinds. Igneous; sedimentary; and these two can be transformed into metamorphic rock with heat or pressure.

Igneous rocks crystallize from molten magma heated beneath the earth's surface. As magma rises through the earth's crust, it may collect in pockets and cool, creating different sizes and shapes of igneous bodies. Batholiths and sills are two types. Collectively, areas of hardened magma are called plutons, after Pluto the God of the Underworld.

Mt. Ascutney is an example of a pluton. It was formed as a magma chamber beneath an ancient volcano. Granite is our most common plutonic rock. Made of feldspar, mica and quartz, it can be fine grained, as found in kitchen countertops, or become a coarse grained pegmatite. Extremely large crystals form when a slurry of minerals is injected into rock fractures and cools very quickly.

If magma cools in the crust, it can also form dikes and sills. It may erupt onto the earth's surface as lava flowing from a volcano of fissure. The ocean floor is composed of volcanic rock, mostly basalt, that erupts along linear ridges, the so-called mid-ocean ridges.

Sedimentary rocks are the result of surface rocks breaking down because of wind, water, ice or chemical weathering. These forces free mineral particles to be carried in streams and rivers to lakes, deltas and the ocean where they accumulate in layer upon layer of eroded sediments. Dunes are created by wind-borne particles, and the large accumulations of sand (drumlins) in the Walpole area were

deposited beneath the last glacier across this terrain.

Beautiful sand beaches and dunes contain fragments of once mighty mountains. When compressed, quartz and other fragments become sandstone. When finer sediments, such as mud and clay, settle on the sea floor, they become shale. Sea creatures with their calcium carbonate shells add to the underwater detritus and form limestone. Coal is made from compressed plants.

Either igneous or sedimentary rocks can undergo further changes by heating and pressure, becoming metamorphic rocks. Meta-sedimentary rocks have their origins as sedimentary rocks that are physically changed. Baked by high temperature and intense pressure, the rock recrystallizes. The original molecular structure is erased. What began as limestone may crystallize into marble. Sandstone becomes quartzite, gneiss or schist like we see as ledge in the Walpole area.

There are different metamorphic conditions that create different outcomes. For example, when shale is subjected to low pressure, it becomes slate. Any fossilized shells in the shale are distorted or destroyed. If slate undergoes moderate pressure and increased temperatures, it becomes schist. At higher pressure and temperatures, fluids penetrate the rock and transform schist into gneiss. Further increases in temperature may cause any of these rocks to melt and

**Smoky Quartz (Igneous)**  
— the official state gem of  
**New Hampshire.**  
-from [www.nh.gov](http://www.nh.gov)



become magma, completing the rock cycle.

The bedrock beneath Walpole and the region has been folded, crushed, torn, heated and pressed into the formations we see today. Fall Mountain is made of two rock formations fused into its rounded ridge. Each was heated and cooled at different rates and times. The Cold River Valley has no fewer than seven geologic features, including a pluton at Drewsville Gorge. Pegmatite mines reveal a motley mix of minerals. What's happened here? Next time, we'll look at the geologic history of our area.

Thanks to: *Rocks and Minerals* by Chris Pellant and *Dictionary of the Earth* by John Farndon,

**Mt. Ascutney, in Vermont, looking north from NH 12A, just before the intersection with Route 103 in Claremont, NH. Mt. Ascutney was formed as an ancient volcano.**  
-2017 photo by Ray Boas







You are invited to participate in

## ***Sending Sunshine***

a local movement to connect with others  
by sending greeting cards through the mail.

### ***Schedule:***

**at the Flat Iron Cooperative - 51 Square - Bellows Falls, VT**  
**Wednesday, February 25 - Thursday, February 26**  
**Wednesday March 4 - Thursday March 5**  
**11 am - 3 pm all four days**

**at The Gathering Place - 14 Westminster St., Walpole, NH**  
**Thursday, March 12 - Friday, March 13**  
**11 am - 4 pm both days**

**Bring** names and addresses of people to whom you would like to send greetings.

**Select** cards designed by local artisans or **Create** a card. **Write** greetings.

**Walk** to the Post Office and **mail** your cards.

Host: Priscilla Reyens — Questions may be directed to [preyns@yahoo.com](mailto:preyns@yahoo.com)



## Women of Walpole

The Women of Walpole, braving the cold, had a warm welcome at the home of Susan Johnson on January 21 for a wonderful presentation by Jeff Miller about the past and present doings of the Walpole Players, including the seminal role his mother played in the establishment of Walpole Players and theatrical programs for all ages in Walpole. WOW members also learned about the success of the home tour and discussed charitable giving options and future meeting topics. The February WOW meeting will be held on Wednesday February 18 at 2 pm at the Hooper Institute, featuring a tour and presentation by its Executive Director Greta Drager.

As always, Women of Walpole welcomes any woman living or working in Walpole to join us. Guests are always welcome (and encouraged) to attend a meeting to see what we are up to. If you would like to learn more or be put on our email distribution list please contact Mary Feeney (508-397-2583) or Carolyn LeBail (714-717-4184).

-Mary Feeney

## Pinnacleview 4-H

On January 10 there was an Animal Science Bonanza, held at Fall Mountain Regional High School. The members that attended were Reagan, Brady, Sawyer, Khole, Harper, Magnolia, Alana, Emma, Sophia, Boe, Holden, Gabe, and Savannah. They were able to learn things like leadership, how to take care of your animals and participated in a skillathon, where they were able to go up to tables and choose what they wanted to do, like making ice cream. Overall the members had a good time between the raffles, activities, and hanging out.

- Alyssa Frederic





## Valentine's Day Violin Sonatas






**Scan for tickets!**

**Schumann, Beethoven,  
& Schubert**

**Sat, Feb 14 at 7:30pm**

**Alyson's Orchard**

**[ashuelotconcerts.org](http://ashuelotconcerts.org)**



**RE-ELECT**

**STEVE**

**DALESSIO**

Paid For By: Bly, Steve Dalesio

## WALPOLE SELECTBOARD

**Experienced & Commitment**

Current Selectman  
Member Planning Board  
Hooper Trustee

Supporter Friends of the Library/Historical Society/Friends of Hooper  
Walpole Horse Thieves/Committee BSA Troop 299



## 4TH ANNUAL SNOW GOLF: CHIP, DRIVE, & PUTT FOR PRESERVATION

Sunday, February 22, 2026 - Scott Farm - Dummerston, VT



**Snow Golf: Chip, Drive, & Putt for Preservation**  
Sunday, February 22 - 12:00-3:00 pm  
Scott Farm - 707 Kipling Rd, Dummerston, VT  
\$35 per person or \$130/team of four

Have you ever wondered what it would be like to hit a golf ball in the snow? So did Rudyard Kipling! Kipling who invented Snow Golf at his home Naulakha in Dummerston, Vermont. The Snow Golf challenge, was first held in 2023. Snow Golf is just like regular golf but even more fun...because it's in the snow! The event is designed to be a fun challenge for anyone who wants a unique way to stay active in the depths of Winter as well as seasoned golfers wanting to practice their game in the off season. And everyone is invited to eat, drink, and enjoy the ambiance, even if you're not golfing.

For more details, or to register  
<https://landmarktrustusa.org/snow-golf>

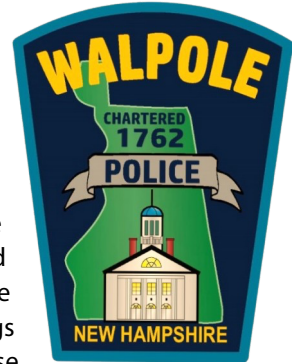
## CHESHIRE KIDS

by Erik Doescher



## Walpole Police Statistics

Following last month's article asking for additional clarification of where police related incidents occur in town, and examples to understand what the numbers mean, a number of residents have expressed to the CLARION this information would be of help to them to "...be more cognizant of their surroundings and possibly help avert those crimes and incidents."



In reply to my January 14 email to the Police Department and Selectboard seeking those specifics and clarifications to help residents, the Police Department Office Manager replied, "...The Chief and I have spoken regarding making changes to our graph and reporting. I am certainly ready for a change! We will be working on more details and specifics vs. our broader categories starting with our month of January reporting."

-Ray Boas

## Public Safety Alert: Delivery Service Imposters and Home Invasions

*(Editor's Note: Ironically the below was re-posted by a high school classmate on Facebook on January 19 from the Wilton, Connecticut Police Department)*

Across our region and nationwide, police departments are seeing a rise in home invasions involving suspects posing as delivery drivers. In several recent cases, residents opened their doors expecting a package only to be confronted by offenders attempting forced entry and robbery.

Our mission is to serve and protect, and that includes identifying emerging crime trends, warning the public, and providing safety tips to avoid victimization.

- Do not open the door for unexpected deliveries
  - Use doorbells, windows, or cameras to verify before answering
  - Legitimate delivery drivers will not demand entry to your home
  - Stay alert and trust your instincts
  - Report suspicious delivery-related activity to 911 or your local police department
  - Share this message with family, friends, and neighbors
- Be vigilant. Be cautious. Be safe.

Together, we can deter these crimes and protect our community

-Ray Boas



# GREATER FALLS INSURANCE

serving VT and NH since 1996

Home • Auto • Farm • Business • Motorcycle • Recreational Vehicles

7190 US Route 5 • Westminster, Vermont 05158  
802-463-1900 • [www.greaterfallsinsurance.com](http://www.greaterfallsinsurance.com)

## Terry White L.M.F.T. Psychotherapy

Adult Individuals ♦ Couples  
Strategic Parenting Consultations  
Depression ♦ Anxiety ♦ Eating Disorder

**805-451-1337**

Walpole, New Hampshire - Licensed since 1990

## Proud to support the neighborhood

Being a good neighbor means being there for my community. As your local State Farm® agent, I'm ready to help whenever you need me. Give me a call.

As a lifelong Walpole resident, I care about our community. Don't trust your insurance and financial needs to a stranger—call me today!



### Craig A Vickers

Agent  
668 Main St  
Keene, NH 03431

Bus: 603-352-3650  
[www.keeneinsurance.com](http://www.keeneinsurance.com)  
[craig@keeneinsurance.com](mailto:craig@keeneinsurance.com)



State Farm  
Bloomington, IL

## G&R EQUIPMENT

### AVAILABLE TO RENT:

\*With or without Operator



#### JOHN DEERE 75D

- Digging & Shaping Bucket
- Blade
- Thumb
- 4-Way Coupler

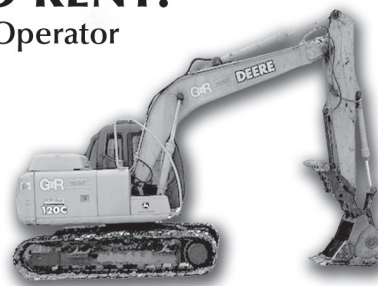
#### KOBELCO ED 150

- Two Digging Buckets
- 6-Way Blade



#### JOHN DEERE 160LC

- Digging & Shaping Bucket
- Thumb Attachment



#### JOHN DEERE 120

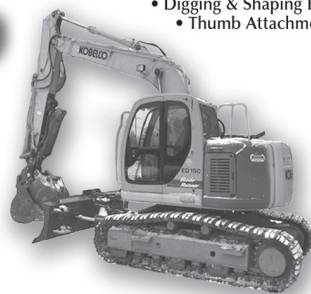
- Digging & Shaping Bucket
- Blade
- Thumb
- 4-Way Coupler

#### JOHN DEERE 50

- Digging & Shaping Bucket
- Blade
- Thumb
- 4-Way Coupler

#### Lull- Ingersol 843

- 35 Digging Bucket
- Thumb
- Rubber trails
- excavator



**Hourly, Weekend, Weekly & Monthly Rates Available**

*All are great for new construction, additions, land clearing, drainage or any type of excavation need...*

\*Either Renter or Operator **MUST** be Experienced

**G&R EQUIPMENT – Walpole, NH 603-904-4544**



# What's Happening in Walpole Schools



## Walpole Girls Basketball Remains Undefeated Over Halfway Through Season

By Addie Hearne (8th grade)

The 25-26 Walpole Girls Basketball season is underway. Walpole is looking to have another great season to build off of last season's success. As of mid January, the girls' team is undefeated with a perfect record of 9 -0. The girls, led once again by coach Sandy Smidutz, have learned to play well both individually and together as a team. The girls' team have won nearly all of their games by a healthy margin. Walpole is a little more than halfway through the season, with a few games happening each week from now into February. Our most challenging team to play was Vilas with 2 tough hard fought games.

The playoffs are coming up and will begin the second week of February. Walpole has a lot of skilled and hardworking players. Leading Walpole are the eighth graders, which include London Swain, Addie Hearne, Mckinley Ruskowski, and new player Mason Perron. "I feel like we've been pretty powerful this year and we are undefeated. We have learned many things, such as learning to play smart, like knowing what you're going to do on and off the ball," said seventh grader Finley Aube.

Walpole picked up another win, this time against Charlestown, on Tuesday, January 20th. The girls' team hopes to continue their successful momentum as the season heads down the home stretch.

## Fall Mountain Cross-Country Skiing Season Gets Underway

By Sadie Andrews (6th grade)

On January 13th, the Fall Mountain Cross-Country Skiing traveled to Gunstock Resort for a competition. Middle schoolers from Walpole included Sadie Andrews and Sophia Formicia, both age 11 sixth graders, and Keagan Formicia, a seventh grader. Other Walpole athletes competed with the team. These student-athletes are now at Fall Mountain Regional High School. The race consisted of Conval, Deeryfeild, Keene, and many other local schools. The athletes did well with the skiing portion of the competition but struggled with hitting the targets. Since this was just the first competition of the season, it is a skill that the team will continue to work on and practice. There are many more competitions coming up soon, such as on January 21st, which will get the Fall Mountain Cross-Country Ski team another opportunity to improve.

## How to Enjoy Winter

By Reagan Westover (6th grade)

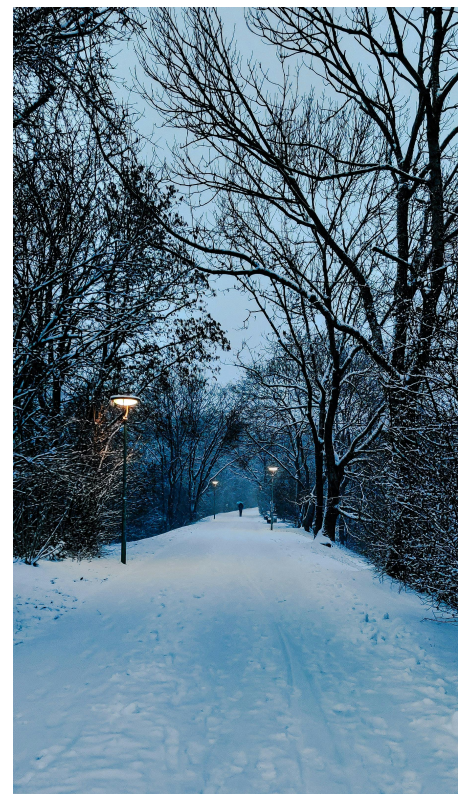
Winter is a wonderful time (for some). Winter is a time where you can play certain sports, share a lot of laughs, and enjoy things that you can't when there is no snow. Here are some ways that you can embrace, and enjoy winter.

First, the most fun is that you can enjoy the snow and ice. You can go tubing or sliding or sledding. You can skate around or play hockey. If you don't like the cold or get sick of it easily, you could go inside and sit by a warm cozy fire with some hot chocolate. Hot chocolate does not taste as good in July.

Another great thing about winter is the holiday season. In December,

there's Christmas and Hanukkah and Kwanza. January has the New Year. February has Groundhog's Day (granted, not as exciting as the first two months).

Before the winter is over I have a couple suggestions for you. Number one: go sledding or tubing. It's so much fun you can even try it with a family member or even a friend or have just as much fun on your own. Number two: go skiing or snowboarding. Those activities are amazing and the more you do them, the better you will get at them and you can challenge yourself. Number three: build a Snowman. If you'd rather, you can even make it a different animal. You can make it a dog, a cat, or even a dinosaur. Just make sure you get outside this winter because even though it's cold, it's pretty amazing and, at times, even beautiful. You never know what's out there until you look.



**Keep Up  
on Walpole Happenings**  
Visit The Walpolean  
<https://thewalpolean.org/>  
Sign Up to  
FOLLOW BLOG VIA EMAIL



## Questions about Season 5 of Stranger Things

By Gaby Carbone (8th grade) and Wilder Moffit (6th grade)

Warning: This article contains spoilers for parts of season 5 of Stranger Things.

The first question, and possible mistake, is when Holly Wheeler in Season 5, episode 7 is breaking out of Vecna's lair, she is wearing an Under Armour shirt. The scene supposedly takes place in 1989, while the company of Under Armour was made in 1996. This is a mistake that many viewers compared to the Starbucks coffee cup being visible in an episode of A Game of Thrones. Some theorize (optimistically) that this mistake was intentional by the Duffer brothers to show that time in the Upside Down is not chronological and, therefore, could include elements from other time periods. We don't agree with that assessment.

Another strange omission or error involved the character of Patty Newby. Patty's character was from the Broadway show that takes place within the Stranger Things universe. Newby is Henry's girlfriend and she wasn't in season 5, despite the fact that there were elements of time travel (at least through memories) where she could have played an important role in helping the viewers see the connections between Henry and some of the older characters (such as Hopper and Joyce). Another notably absent character was that of Dustin's girlfriend, Suzie. She played an important role in helping Dustin in previous episodes yet she wasn't even mentioned in the newest season. The Duffer brothers never stated that the couple had broken up and her lack of mention feels like a writing mistake.

Finally, why weren't there any demodogs, demobats at the final battle to help Vecna. Some demodogs were taken out when trying to get after Max in the hospital scene, but that couldn't have been all of them, while the bats that had killed Eddie in season 4 seem to have vanished after

vanquishing him. These creatures seem to have abandoned the Mind Flayer, and Henry/Vecna, when he needed them most.

## Electric Cars: The Controversy

By Sawyer Dumont (8th grade)

Electric cars are very controversial, with lots of debate coming up about if they're better or worse for the environment, if their upfront costs are worth it, and a few other occurrences about malfunctioning features on the cars, such as autopilot.

First, some positives. Electric cars are quick off the line, with cars like the Tesla Model S Plaid being able to launch from 0-60 MPH in 1.98 seconds. There are also some other lesser known brands such as Rimac, or Lucid Motors. Rimac made the Rimac Nevera, a 2 door electric hypercar, packing 1,914 horsepower and 1,741 lb-feet of torque. Despite weighing over 5,000 lbs, it can launch from 0-60 in 1.74 seconds and has a top speed of 258 MPH. It also holds the record for the fastest reverse speed, being able to reverse at 171 MPH. Lucid Motors made the Lucid Air Sapphire, which is an extremely fast 4 door sedan, packing 1,234 horsepower and 1,430 lb-feet of torque. It has a top speed of 205 MPH, and can launch from 0-60 in 1.89 seconds. These vehicles are also

expensive, ranging in price from \$100,000 all the way to \$2.5 million.

A lot of electric cars, such as family SUVs, are usually pretty advanced in terms of technology and probably wouldn't have many issues because they have much less moving parts, being electric. Having a family EV wouldn't be a bad idea, considering how simple they are. However, although all of these pros might sound good, if you dig deeper, you can still find many issues with EVs.

EVs usually have high purchase costs. For example, some Teslas can cost over \$100,000. Their batteries also lose maximum capacity over years. Shown in a study by Geotab, EV batteries degrade at a rate (on average) of roughly 2.3% per year. That means that after 5 years of owning an EV, your battery can only hold 88% of its original range. It might not seem like a lot, but a lot of electric vehicles, on average, have a range of 300 miles. Over 5 years, that will degrade to 264 miles, a loss of 36 miles in range.

EVs are still controversial to this day and may be controversial for a long time before the issue is fully settled.

page 14 - WINTER  
below — Electric Car "Fueling"

Royalty Free Images  
found by the class on:  
<https://www.pexels.com/>



# HOOPER CENTENNIAL EVENTS

**APR 18**

**EARTH DAY 5K RUN/WALK**

**MAY 16**

**HOOPER BIRTHDAY PICNIC**

**SEPT 26**

**HARVEST FEST**

**DEC 4 & 5**

**HOLIDAY WREATH MAKING**

## ✦ ADULT AND FAMILY PROGRAMS

- **Coyotes and Bobcats: Our Wild Neighbors at Walpole Library**
  - Adult program- Feb 2
  - Kids program- Feb 12
- **Growing Together Garden Series**
  - March 5- Garden Planning
  - April 2- Pest and Disease Management
  - May 7- Soil Health
  - July 9- Canning and Preserving
  - Sept 17- Seed Saving
  - Oct 29- Winter Prep
- **Secrets of Salamanders & Spring Frogs with the Harris Center**
  - March 11
- **Family Earth Day Hike with the Harris Center**
  - April 22
- **Flower CSA**
  - July 10- Aug. 14

## ✦ 2026 HOOPER CAMPS

<b>Feb 23-26</b>	Winter Explorers Camp
<b>Jun 22-25</b>	Morning Camp 1
<b>Jun 29- July 2</b>	Morning Camp 2
<b>July 6-9</b>	Adventure Camp
<b>July 13-16</b>	Wood Camp

## ✦ 2026 HIGH SCHOOL PROGRAM

- **HS Work Program**
  - June- August
- **HS Presentation Night**
  - July

Check our our website or  
Facebook page for more details!

Questions? Email us at  
[hooper.director@gmail.com](mailto:hooper.director@gmail.com)







The momentum leading into this year has been inspiring, from continued support of longtime donors and community members to the enthusiasm of new supporters, and we are deeply grateful as we begin our centennial year.

As we look ahead to a year filled with events, programs, and workshops, we invite you to explore meaningful ways to engage with the Hooper community. Whether it's participating in a program, volunteering your time, or contributing items or financial support, each helps strengthen our mission and community. To get involved right now, consider donating from our wish list of classroom and building supplies using the QR code on this page. Also check out our list of the 2026 Centennial Events found on our website or the sidebar of the CLARION website — or clip and save page 16 in this issue.

Our fantastic centennial line-up includes a Hooper Birthday Picnic (May 16), Earth Day 5K (April 18), Fall Festival (September 26), and more. Join us in February for our Winter Explorers Camp (only a few spots remain!) and our library programs at the Walpole Library titled 'Coyotes and Bobcats: Our Wild Neighbors'. For more details, visit our website at [hooperinstitute.org](http://hooperinstitute.org) or email us at [hooper.director@gmail.com](mailto:hooper.director@gmail.com).

Keep an eye out for updates throughout the year and join us in celebrating this milestone together. We look forward to seeing you at our events, programs, and workshops as we honor Hooper's past, present, and future.

- Greta Drager



## Support Local Environmental Education

Donations to the Hooper Institute's wishlist directly fund programs, camps, and materials that connect our community with nature.

Scan the QR code to give today!



**COMMUNITY  
POWER COALITION  
OF NEW HAMPSHIRE**  
*For communities, by communities.*

This is an update on the Community Power Coalition of NH (CPCNH) and utility rates for the coming six months - from February through July.

CPCNH, the default provider of electricity for Walpole residents, recently set their rate at 0.146 cents per kilowatt hour (kWh) for the next six months. This rate is slightly higher than the rate of 0.137 per kWh announced by Liberty Utilities for the same period.

CPCNH's rate reflects a cash flow issue that resulted from CPCNH not purchasing enough power in advance to accommodate the needs of its customers during the unusually cold winter of 2024-2025. CPCNH had to purchase power on short notice at a higher price, and that depleted CPCNH's financial reserves. The new rate is intended to rebuild the reserves and put CPCNH once again on a solid financial footing.

CPCNH's rate of 0.146 per kWh is 0.009 cents higher than the 0.137 per kWh Liberty is charging. Based on average monthly usage of about 650 kWh, a typical CPCNH customer will pay about \$5.85 more per month for electricity (\$0.009x650) than a Liberty customer during this period.

The Walpole Community Power Committee still believes that the value proposition of CPCNH is solid, and it will improve. In the long run, CPCNH will benefit all of the communities who are part of the coalition.

We want to remind you that you can change your power supplier at any time you wish. If you want a different supplier, simply contact that supplier and request to be transferred. If you'd like to transfer to Liberty, you can call CPCNH at 866-603-7697 and ask to be put on the Liberty Default Service. Switching back to CPCNH in the future would always be an option.

We will continue to participate in the oversight of CPCNH and continue to keep you informed.

- Paul Looney



## Tri-State Restoration, LLC

**Need help?  
Call TSR!**

# 603-352-6802



**WATER DAMAGE**



**FIRE DAMAGE**



**SMOKE DAMAGE**



**MOLD REMEDIATION**

*Proudly serving New Hampshire,  
Vermont & Massachusetts*

## tristaterestoration.info

## Walpole Resident Honored

Advantage Truck Group (ATG) has named Walpole, NH resident Michele O'Brien its 2025 Pete DePina Legacy Award winner for Vermont, recognizing her for making an impact on her fellow employees, customers and the company.

"Michele consistently performs a truly Herculean task: keeping our Westminster facility running flawlessly. As a proactive self-starter, she has been instrumental in not only maintaining our Elite Support certification but also ensuring we exceed its criteria. She embodies excellence, driven by a tenacious drive to consistently improve our facility and an unwavering commitment to enhancing the experience of those around her," said ATG President & CEO Kevin Holmes.

The highest recognition an ATG team member can receive, this award is given annually to one team member at each of ATG's eight locations who most embodies the values and qualities employee Napoleon "Pete" DePina was known for, including integrity and a quiet leadership grounded in humility, generosity and selfless service to others.

"Our ability to provide the best service for our customers reflects the dedication and contributions of our team members," Holmes said. "It is an honor to recognize team members who go beyond expectations, and whose efforts and attitude, like Pete's, elevate the quality of service across our network and make a positive impact on the people around them."

ATG team members were nominated by their peers for the award. Winners were presented with a monetary award that they will continue to receive as part of their profit-sharing bonus each year throughout their employment with the company.

-Joan DeCoste

**Please Support  
Our Advertisers**



## FROM THE CLARION

**A sampling of way we've reported in more than 14 years of publication:**

**One Year Ago (February 2025)** - The Restaurant at Burdick's and The Walpole Grocery. on January 20th welcomed a new General Manager – Luca Paris. Many of us know Luca from his former restaurant in Keene, Luca's Mediterranean Café.

**Three Years Ago (February 2023)** - Age in Motion, a balance and exercise class for seniors 50 and older, is back. Janet Chamberlin will be leading the class. She has recently completed training with AIM Trainer Pam Durkin who said "Janet will be an excellent teacher".

**Five Years Ago (February 2021)** - Walpole has 106 named roads extending just over 60 miles, but there is only one road that has been designated a Scenic Road - Farnum Road - bucolic and dirt, 0.676 miles between Watkins Hill Road and County Road. A warrant article to designate Old Drewsville Road also as a scenic road, and was approved at Town Meeting.

**Seven Years Ago (February 2019)** - On December 27, 2018, the papers were signed, and the 10 acres on the Connecticut River, now known as the Gateway to Walpole, became the property of all Walpole residents.

**Nine Years Ago (February 2017)** - New Resource for Seniors — River Valley Seniors At Home is the name a group of local residents are using as they organize a local Village program for residents who want to age in place at home.

**Eleven Years Ago (February 2015)** - At a January assembly at Walpole Elementary School a check for \$860 was presented to Mary Lou Huffling for the Fall Mountain Food Shelf – donated a penny at a time by students.

**Thirteen Years Ago (February 2013)** - Great Brook Farm, owned for over 250 years by the Graves family, placed 34.6 acres in a conservation easement purchased by the Monadnock Conservancy.

The  
**Walpole  
Clarion**  
ON-LINE

Would you like to read or share your **Clarion** on-line? Would you like to receive **Clarion** reminders of closing dates or events? Then, head to <https://thewalpoleclarion.com> and scroll down on the right to "Follow this Blog" and sign up..

**WE PRINT AND MAIL  
POSTCARDS, APPEALS  
AND NEWSLETTERS**

*Right here  
under our roof.*

**HOWARD PRINTING**

I n c o r p o r a t e d

**802-254-3550**  
**HowardPrintingInc.com**  
Brattleboro, Vermont



# MILESTONES

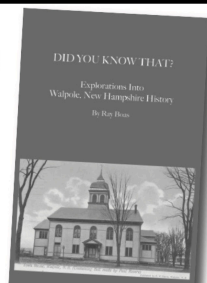
## Passed

Judy Fellows

February 4, 1948 - December 23, 2025



Walpole History Books  
\$20 each  
Special!  
Both for \$30  
Ray Boas  
603 756-4545  
rayboas@comcast.net



## Walpole Village School and Community Room Progress

Fundraising is in the final stretch thanks to extraordinary generosity from our community. The Walpole Village School and Community Room capital campaign is nearly complete. As of January 15, we are just \$50,686 away from reaching our capital campaign goal!

To donate: Make checks payable to The Walpole Foundation, PO Box 167, Walpole, NH 03608 — Donate online at [www.thewalpolefoundation.org/wvs](http://www.thewalpolefoundation.org/wvs) — The Walpole Foundation accepts donations of stock and appreciated securities and gifts from Donor Advised Funds. New Hampshire businesses with Business Profits, Enterprise, or Insurance Premium Tax liability are encouraged to support the project through **state tax credits**. The project has \$127,000 in NH Community Development Finance Authority (CDFA) tax credits available for purchase, with a deadline of March 31, 2026.

- Example: a donation of \$100,000 = \$75,000 state tax credit
- Tax credits carry forward for up to 5 years
- A portion may be eligible for a federal tax deduction
- Tax proceeds fund our project (instead of going into the state's general fund)

To learn more, visit [nhcdfa.org/walpole-village-school-community-room](http://nhcdfa.org/walpole-village-school-community-room) —  
For questions: Contact Jocelyn Horton at [jocelynmh@mail.com](mailto:jocelynmh@mail.com)



## The WALPOLE Clarion

A monthly for the Walpole Community

Ray Boas, Publisher

PO Box 757

Walpole, NH 03608

603 756-4545

Submissions about community events  
and achievements welcomed.

Submit ads, articles & photographs to:  
rayboas@comcast.net

March Deadline - February 21

Tara Sad: Copy-Editing

Ray Boas: Layout & Design

The Walpole Clarion on-line at:

[thewalpoleclarion.com](http://thewalpoleclarion.com)

## PUBLISHER'S CORNER

Written 7 January — Quoting "47" after taking over Venezuela, "You know what Denmark did recently to boost up security on Greenland? They added one more dog sled." On the fifth anniversary of January 6 speaking to House Republicans. "I wish you could explain to me what the hell is going on with the mind of the public because we have the right policy. ... They're vicious people." These, and other demeaning statements are not how a leader should speak. In fact, not anyone.

When touring my grandchildren in Paris during the "reign of '45," I was afraid to open my mouth, embarrassed for fear of being recognized as an American. Now it is horrifically worse. Speaking the truth, Navy Captain Mark Kelly, a pilot, astronaut and patriot, and subject to the Uniform Code of Military Justice (UCMJ) could be court-martialed with loss of military retirement pay and benefits, and more. Retribution. Hitler ordered all of my great-grandfather, Franz's, books burned because of his teachings that "no culture is inherently superior." Retribution. And now the killing on Minneapolis streets. Retribution.

The CLARION on purpose has avoided controversy. It's not what I wish to do with editorial content, instead serving the community with news of what is about to happen and what has happened in town. But enough is enough, I had to say something. And, as a retired US Navy Supply Corps officer, also subject to the UCMJ, I now too fear retribution.

—Ray Boas, Publisher

PRSRT STD  
ECRWSS  
U.S. POSTAGE  
**PAID**  
EDDM RETAIL

Local  
Postal Customer

## Keep your money local.

We're proud to be the  
Monadnock Region's truly  
local bank, committed to  
giving back to our community  
and providing customers  
with the best products  
and services in town.



walpolebank.com | Member FDIC |    Photo by Scott DuChene

The savings bank of you.<sup>SM</sup>

*Happy Presidents Day*



Presidents' Day was established in 1879 as Washington's Birthday, a federal holiday for George Washington, later moved to the third Monday in February by the 1968 Uniform Monday Holiday Act, which also led to the popular Presidents' Day" name to honor Washington and Lincoln, though the official federal name remains Washington's Birthday.